

oakheart

£300,000

Guide Price
Old Heath Road, Colchester



Guide Price: £300,000 - £325,000.

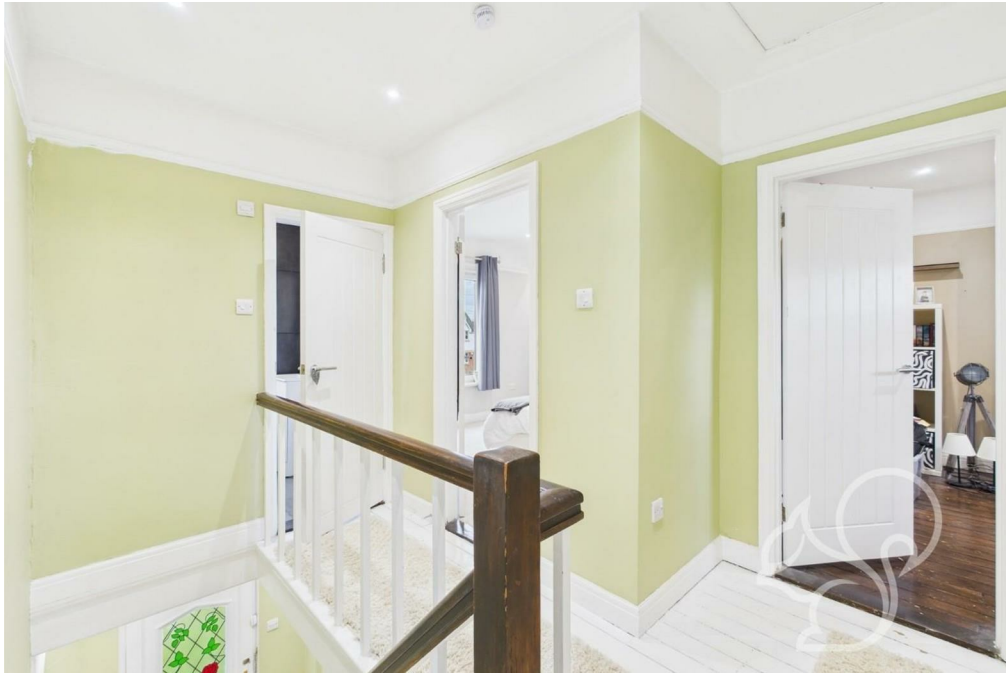
Located on the desirable Old Heath Road in the South side of Colchester, this well presented three-bedroom semi-detached home offers a perfect balance of modern design, generous living space, and practicality. Set within close proximity to well-regarded schools, local amenities, and excellent transport links, this home is ideal for families, professionals, or those looking for a stylish and comfortable living.













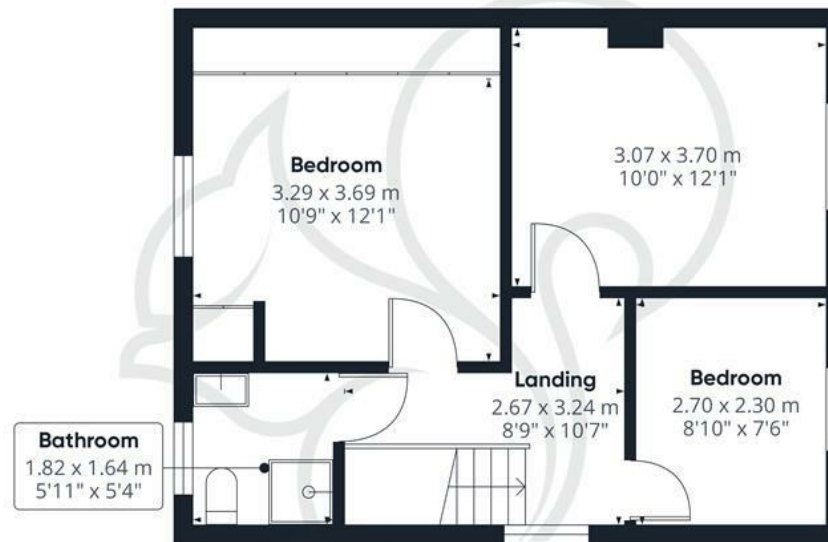




oakheart



Ground Floor



Floor 1

Approximate total area⁽¹⁾

88.4 m²

952 ft²

(1) Excluding balconies and terraces

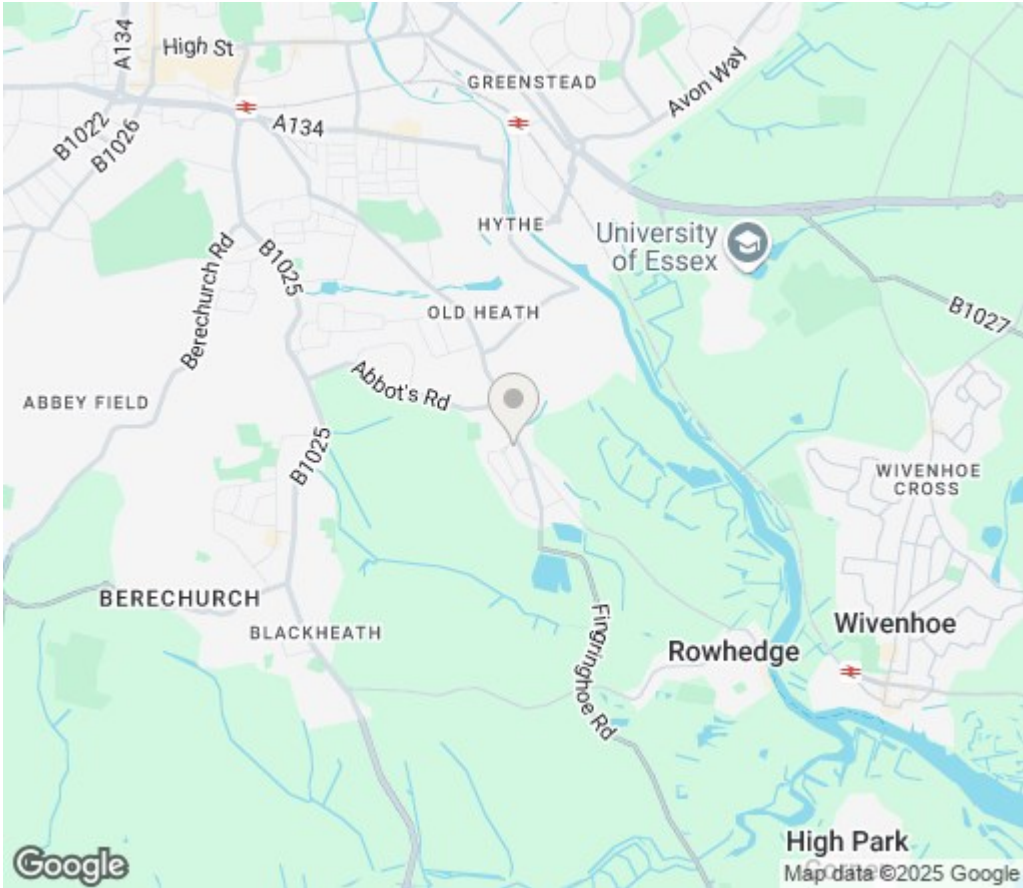
Calculations reference the RICS IPMS 3C standard. Measurements are approximate and not to scale. This floor plan is intended for illustration only.

GIRAFFE360


Local Authority:
Colchester

Tenure:
Freehold

Council Tax Band:
C



Energy Efficiency Rating

	Current	Potential
Very energy efficient - lower running costs		
(92 plus) A		
(81-91) B		84
(69-80) C	69	
(55-68) D		
(39-54) E		
(21-38) F		
(1-20) G		
Not energy efficient - higher running costs		
England & Wales	EU Directive 2002/91/EC 	

Agents Note: Whilst every care has been taken to prepare these particulars, they are for guidance purposes only. All measurements are approximate and are for general guidance purposes only and whilst every care has been taken to ensure their accuracy, they should not be relied upon.

oakheart

Oakheart Colchester

01206 803 308

colchester@oakheart.co.uk

2b Cotman Road, Colchester, Essex, CO3 4QJ